

Professional Office Space For Lease
3825 Valley Commons, Bozeman, MT 59718



Montana Commercial, LLC



SNAPSHOT:

Year Built: 2004

Square Feet Available:

- 1,675 Useable SF

Lease Rate:

- \$12/SF + NNN
- Sale Option Available

FEATURES:

- Great location off Huffine Lane, Near the Ridge Athletic Club
- 5 Private Offices
- Main Floor
- Network / Data Room
- Shared Conference Room
- Shared Bathrooms / One With Shower
- Wood Trim
- Glass Doors
- Wainscoting
- Fully Networked

Grubb & Ellis | Montana Commercial, LLC

2020 Charlotte St.
Bozeman, MT 59718

www.MTcommercialRE.com

Sean Thompson

Sales Associate
406.539.0082 cell

sean.thompson@grubb-ellis.com

Joe Cobb

Sales Associate
406.579.2999 cell

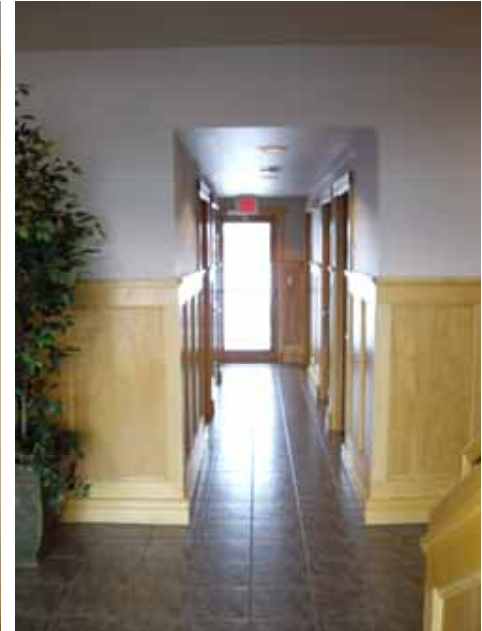
joe.cobb@grubb-ellis.com

Professional Office Space For Lease
3825 Valley Commons, Bozeman, MT 59718



GRUBB & ELLIS.
Montana Commercial, LLC

Montana Commercial, LLC

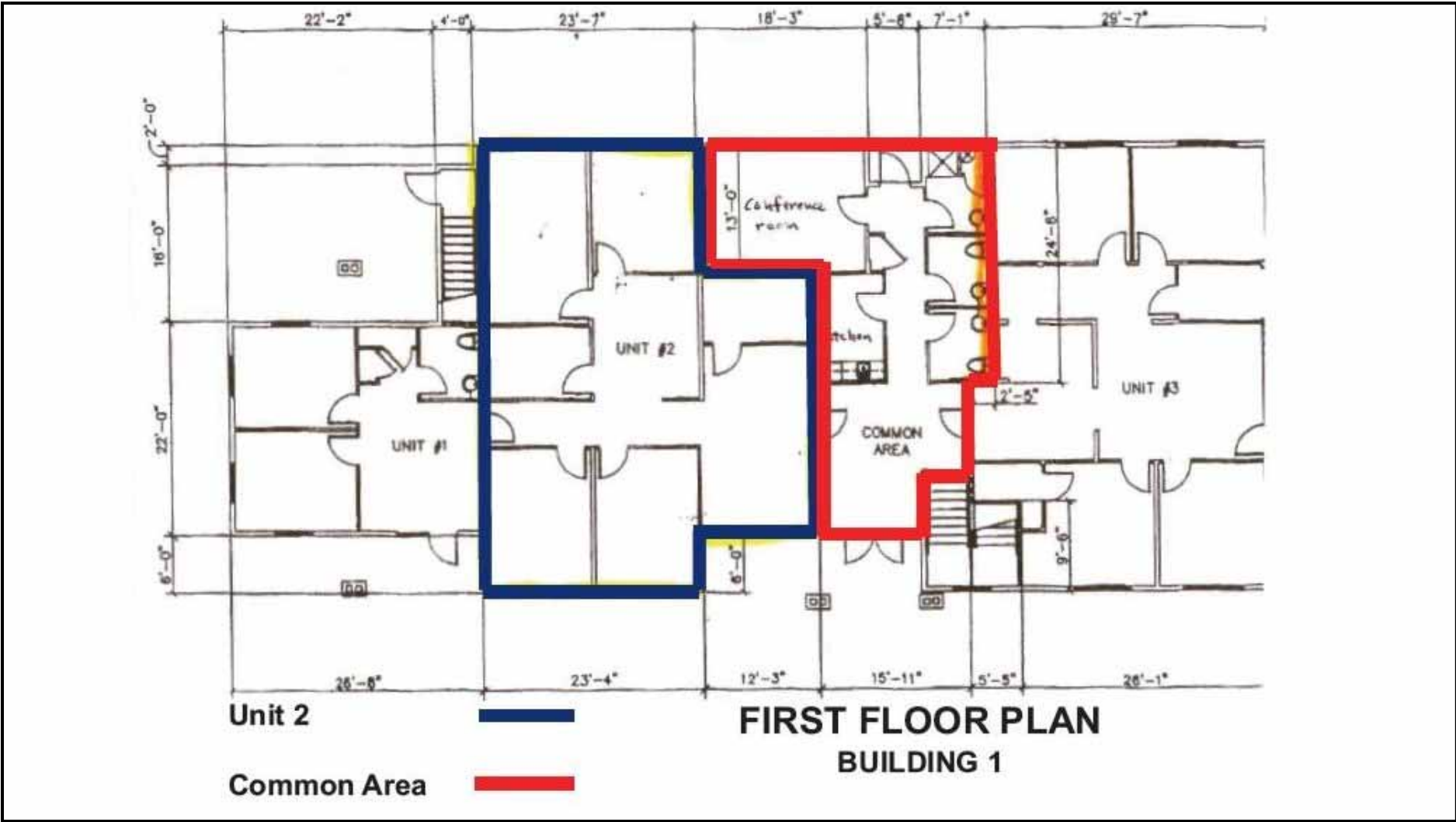


Professional Office Space For Lease
3825 Valley Commons, Bozeman, MT 59718



GRUBB & ELLIS.
Montana Commercial, LLC

Montana Commercial, LLC



Professional Office Space For Lease
3825 Valley Commons, Bozeman, MT 59718



GRUBB & ELLIS.
Montana Commercial, LLC

Montana Commercial, LLC

