

Commercial Lots in Baxter Meadows

Lots 10, 11 & 12, Block 20

Bozeman, Montana



GRUBB & ELLIS.
Montana Commercial, LLC

www.MTCOMMERCIALRE.COM



SNAPSHOT

- | | | |
|----------|----------|----------|
| • Lot 10 | • Lot 11 | • Lot 12 |
| 6,204 SF | 5,557 SF | 5,557 SF |
| \$54,900 | \$49,900 | \$49,900 |

**Can Be Combined for
Larger Discount**

TO LEARN MORE, CONTACT:

Sean Thompson
406.539.0082
sean.thompson@grubb-ellis.com

Joe Cobb
406.579.2999
joe.cobb@grubb-ellis.com

FEATURES

- Commercial Subdivision Lots on Baxter Lane in Baxter Meadows Offering Superb Visibility
- Lots Can Support Two-Story Building at 80% Coverage
- Only \$8.80/SF, Priced to Sell - Well Below Market Value
- Excellent Opportunity for Investor or End-User to Pick Up Premium Lots at Fire Sale prices
- Lots Have Access to all City Services Including Fiber Optics
- Ideal for Office and/or Retail Uses

Commercial Lots in Baxter Meadows

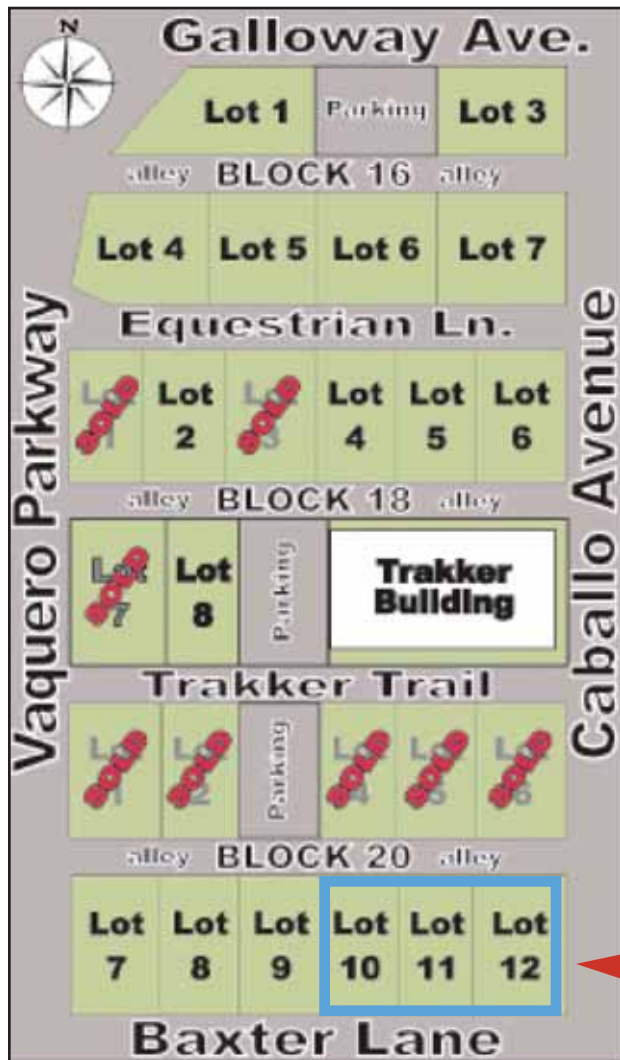
Lots 10, 11 & 12, Block 20

Bozeman, Montana



GRUBB & ELLIS
Montana Commercial, LLC

www.MTCOMMERCIALRE.COM



Baxter Lane

Subject Lots