

**Office/Retail Space For Lease Located In The
Flying Horse Building - 347 Ferguson Ave.
Bozeman, MT**



For Lease MLS # 154097

Montana Commercial, LLC



SNAPSHOT:

Floor	1st
Year Built	2008
Square Feet Avail.	1,647
Price	Negotiable

FEATURES:

- CLASS 'A' OFFICE/RETAIL LOCATED NEXT TO WEEBEE'S & THE RIDGE ATHLETIC CENTER
- OPEN FLOOR PLAN WITH 2 ENTRANCES: 1 COMMON & 1 SEPERATE
- COMMON BATHROOMS
- BUILDING SIGNAGE AVAILABLE
- TENANTS INCLUDE:
 - FLYING HORSE COMMUNICATION
 - VARDA INTERIORS

To Learn More Please Contact:
Grubb & Ellis | Montana Commercial, LLC
2020 Charlotte St.
Bozeman, MT 59718
406.587.8700 main
406.587.3754 fax
www.MTcommercialRE.com

Cam Holt
Commercial Sales Agent
406.209.0127 cell
Cameron.Holt@grubb-ellis.com

Ryan Springer
Commercial Sales Agent
406.579.5586 cell
Ryan.Springer@grubb-ellis.com

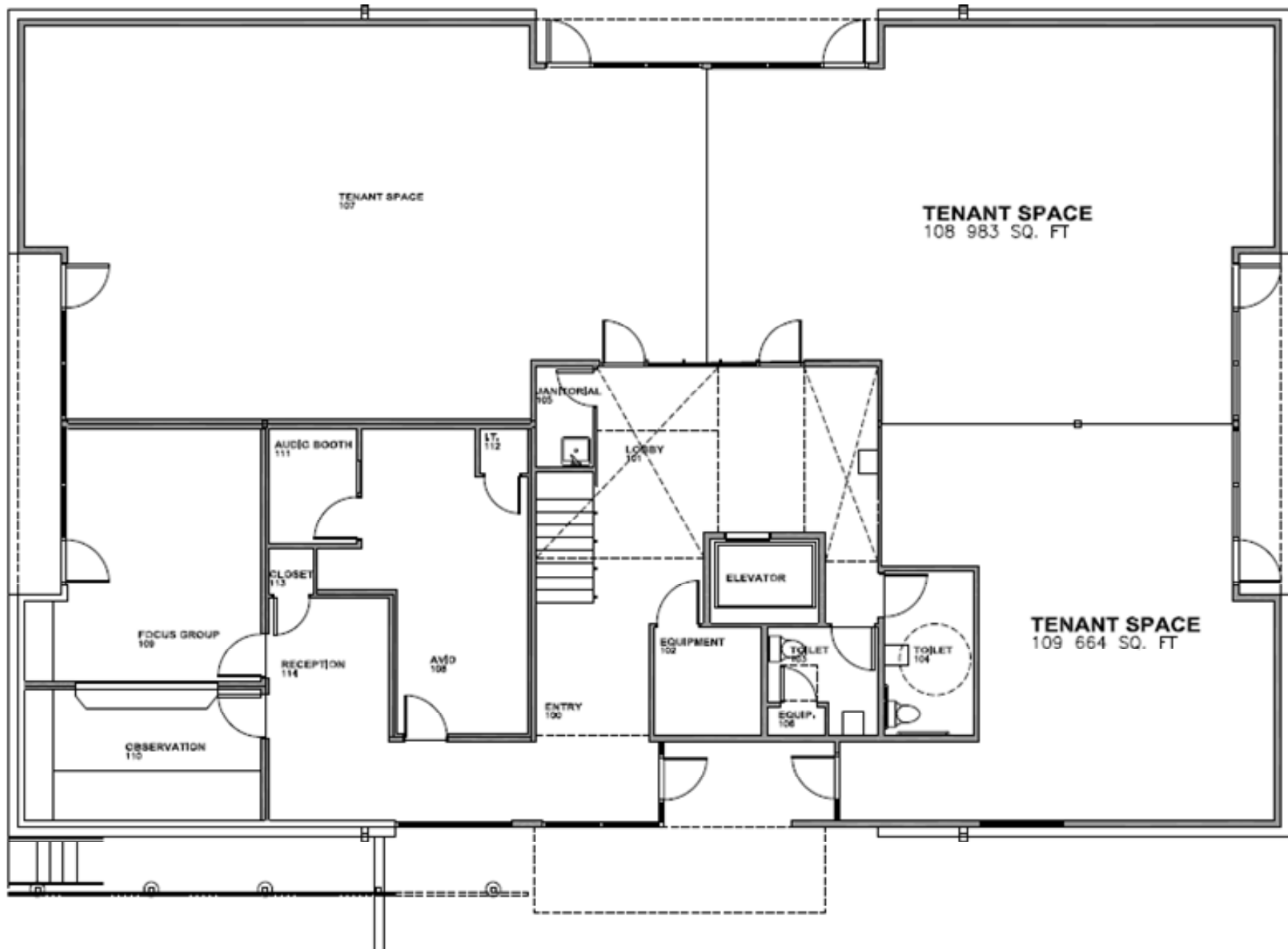
Mike Elliott
President
406.599.0466 cell
Mike.Elliott@grubb-ellis.com

**Office/Retail Space For Lease Located In The
Flying Horse Building - 347 Ferguson Ave.
Bozeman, MT**



GRUBB & ELLIS
Montana Commercial, LLC

Montana Commercial, LLC



Office/Retail Space For Lease Located In The
Flying Horse Building - 347 Ferguson Ave.
Bozeman, MT



GRUBB & ELLIS.
Montana Commercial, LLC

Montana Commercial, LLC

