

Storage Unit for Sale
Unit 17 Cowdrey Storage Units
Big Sky, MT 59716



For Lease MLS # 164065

Montana Commercial, LLC



SNAPSHOT:

Square Feet Avail

- 24' Wide x 34' Long (816 SqFt)

Price

- \$110,000

FEATURES:

- 24' Wide x 34' Long (816 SqFt)
- 14' Tall x 16' Wide Overhead Door
- All Cement Building w/ Insulated Plywood Walls Between Units
- Sprinkler System
- Electrical Units Located Throughout

To Learn More Please Contact:

Grubb & Ellis | Montana Commercial, LLC

2020 Charlotte St.
Bozeman, MT 59718
406.587.8700 main
406.587.3754 fax

www.MTcommercialRE.com

Cam Holt

Commercial Sales Agent
406.209.0127 cell

Cameron.Holt@grubb-ellis.com

Ryan Springer

Commercial Sales Agent
406.579.5586 cell

Ryan.Springer@grubb-ellis.com

Mike Elliott

President
406.599.0466 cell

Mike.Elliott@grubb-ellis.com

Storage Unit for Sale
Unit 17 Cowdrey Storage Units
Big Sky, MT 59716



GRUBB & ELLIS.
Montana Commercial, LLC

Montana Commercial, LLC



Storage Unit for Sale
Unit 17 Cowdrey Storage Units
Big Sky, MT 59716



GRUBB & ELLIS.
Montana Commercial, LLC

Montana Commercial, LLC

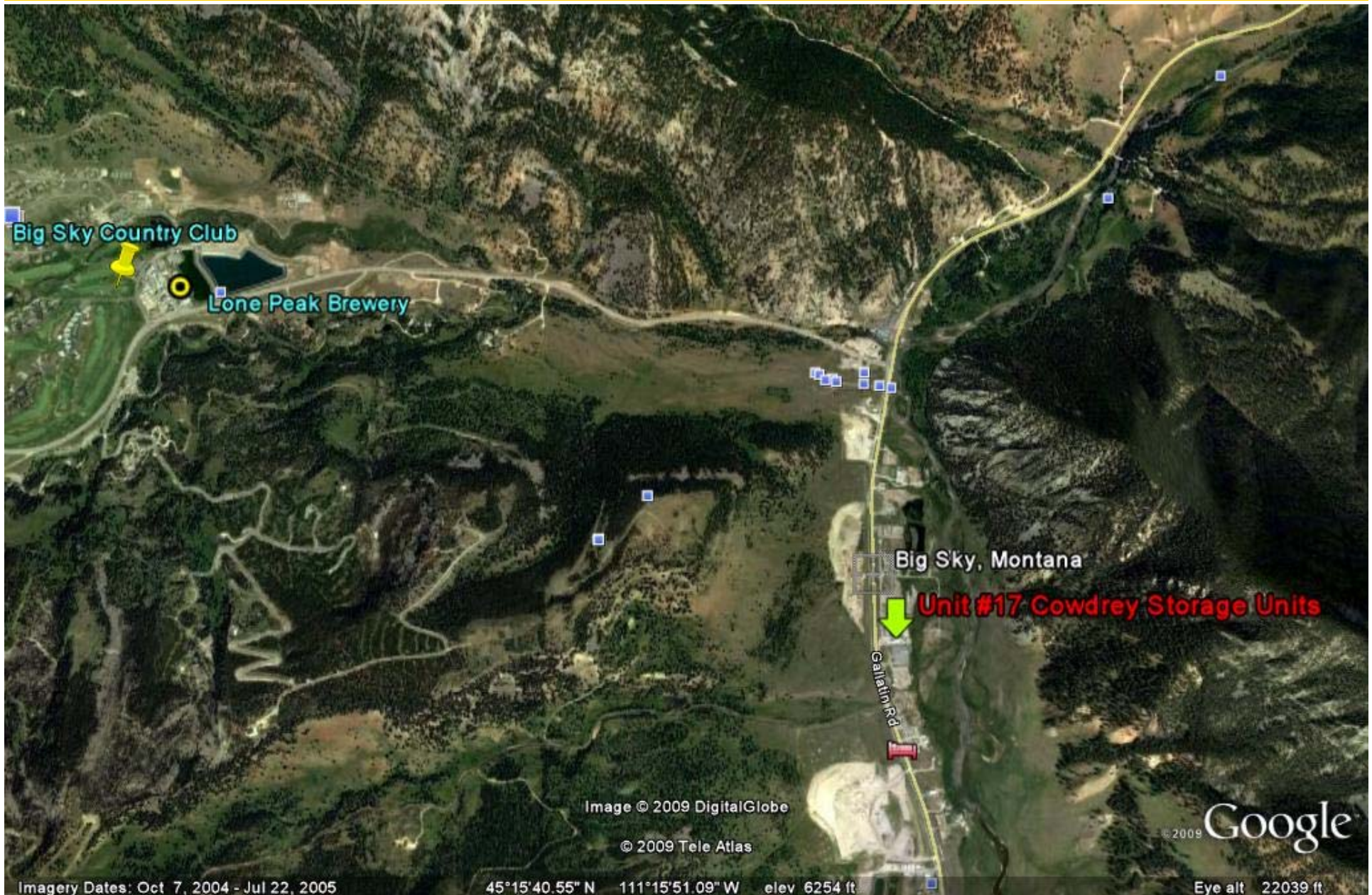


Image © 2009 DigitalGlobe

© 2009 Tele Atlas

© 2009 Google

Imagery Dates: Oct 7, 2004 - Jul 22, 2005

45°15'40.55" N 111°15'51.09" W elev 6254 ft

Eye alt 22039 ft